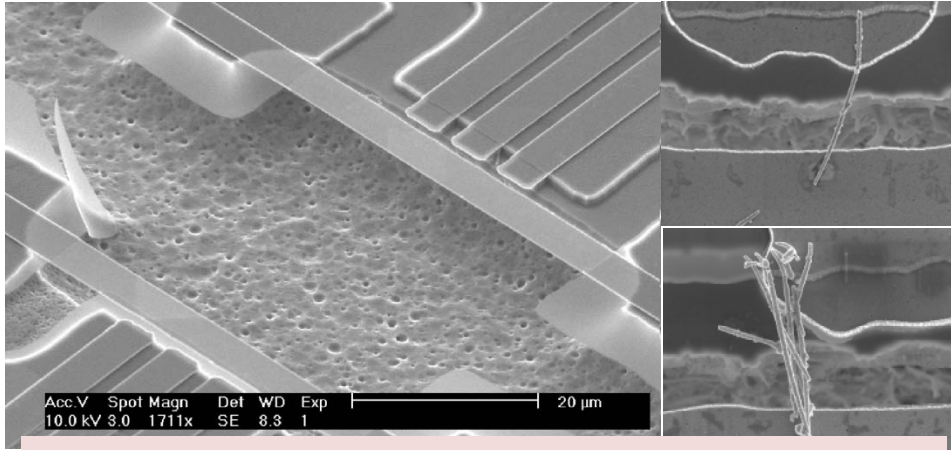


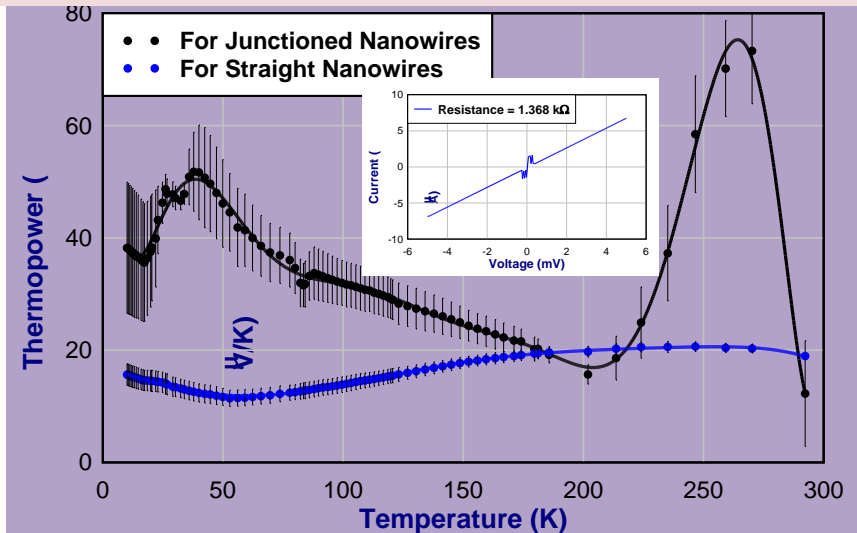
Science at the Micro-Nano Interface

Prasoon Joshi, Nicolas Duarte, Vijaykumar Toutam, Srinivas Tadigadapa

Nanoscale Thermoelectrics

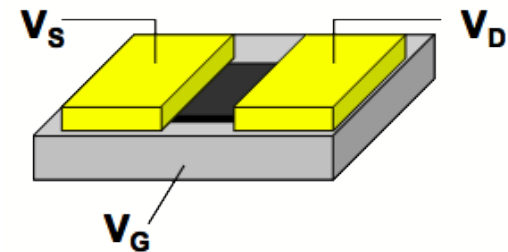
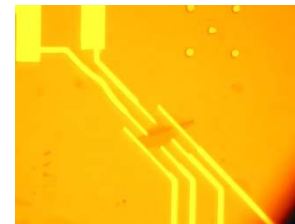
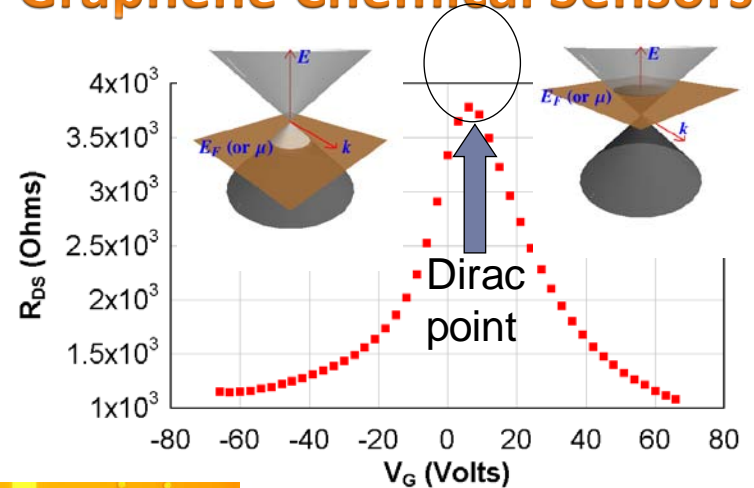


MEMS Workbench for Studying Thermoelectric Transport in Nanowires



Anomalous Thermopower Enhancement in Junctioned Gold Nanowires

Graphene Chemical Sensors



Graphene FET with V_G - I_{DS} Curve

